

Les gammes

MINEURES NATURELLE

Par **Alexis**
de la chaine Youtube
Harmonie et Piano



Comment lire les aides-mémoires

Sur une partition classique les dièses et bémols en début de partition correspondent à une gamme.

Ici 2 dièses (Do et Fa, correspond à la gamme de Si mineure harmonique)

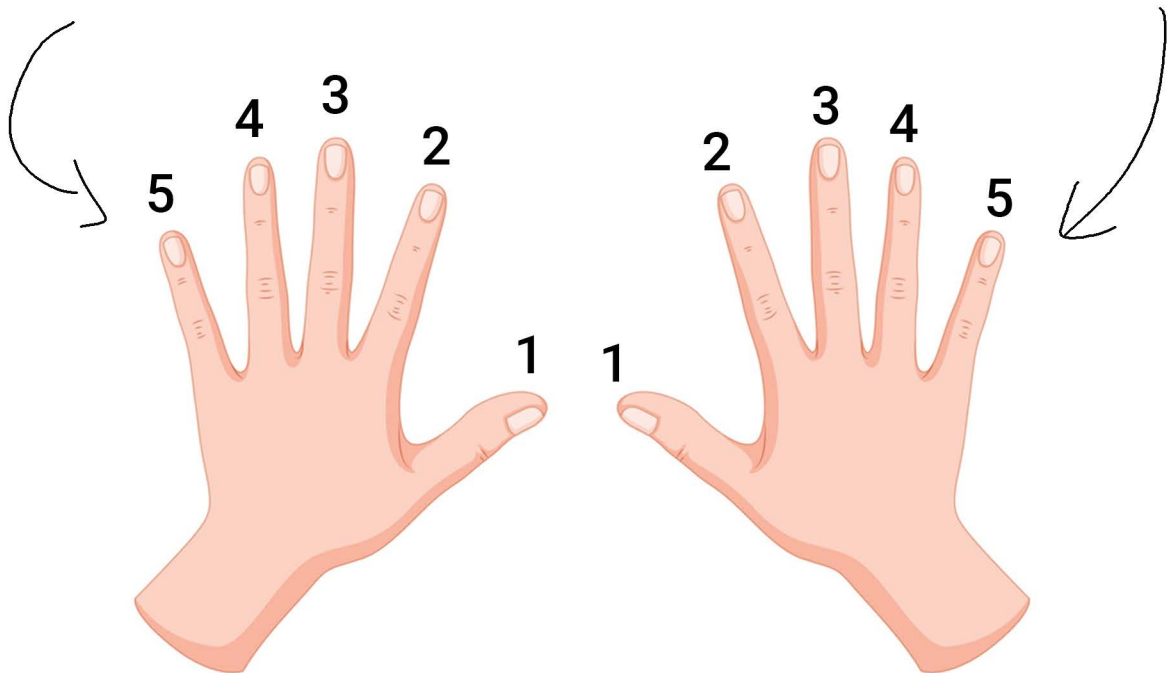
Le nom de la gamme

The diagram shows a musical staff with two sharps (F# and C#) and a piano keyboard below it. The keyboard keys are color-coded: white keys are white, black keys are black, and the keys for the B minor scale (B, C, D, E, F, G, A) are highlighted in red. Fingerings are indicated by numbers 1-5. For the left hand (bottom row of red keys), the fingering is 1-4, 3-2, 1-3, 4-3, 1-3, 2-1, 3-4, 5-1. For the right hand (top row of red keys), the fingering is 2-3, 4-2, 1-3, 2-1, 3-4, 5-1.

Gamme de **Si mineure naturelle**

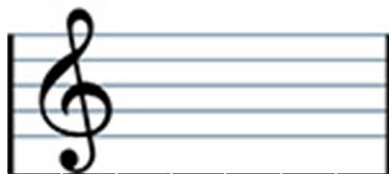
Les numéros de la **rangée du bas** correspondent aux doigtés **main gauche**

Les numéros de la **rangée du haut** correspondent aux doigtés **main droite**

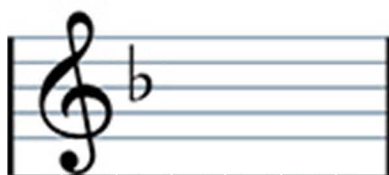
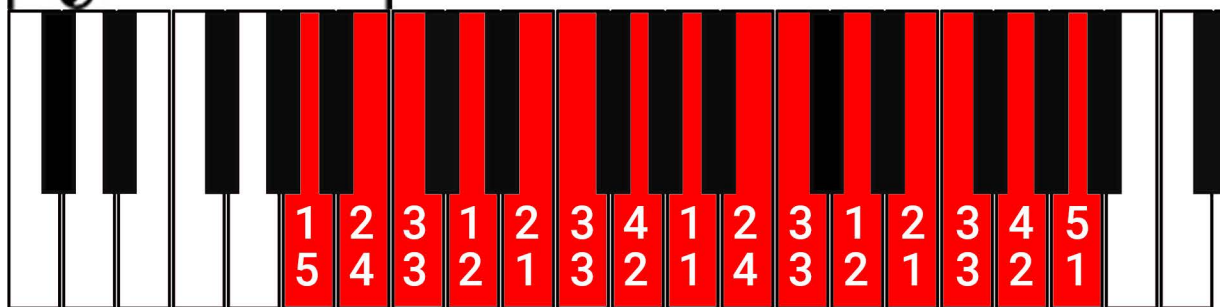


Main gauche

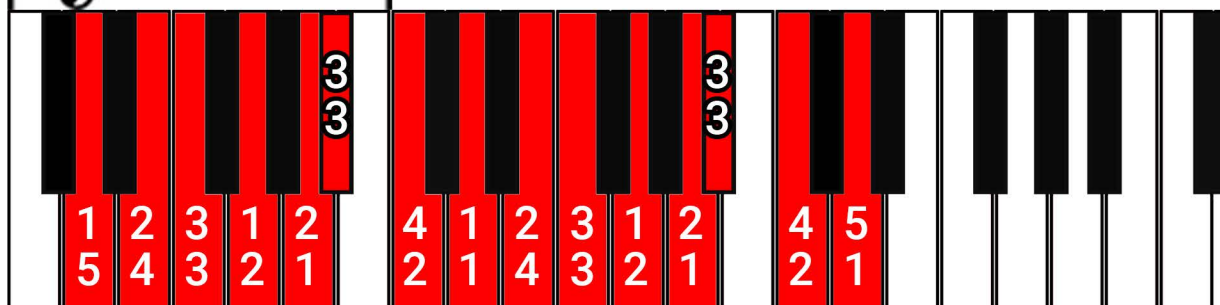
Main droite



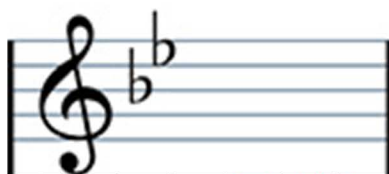
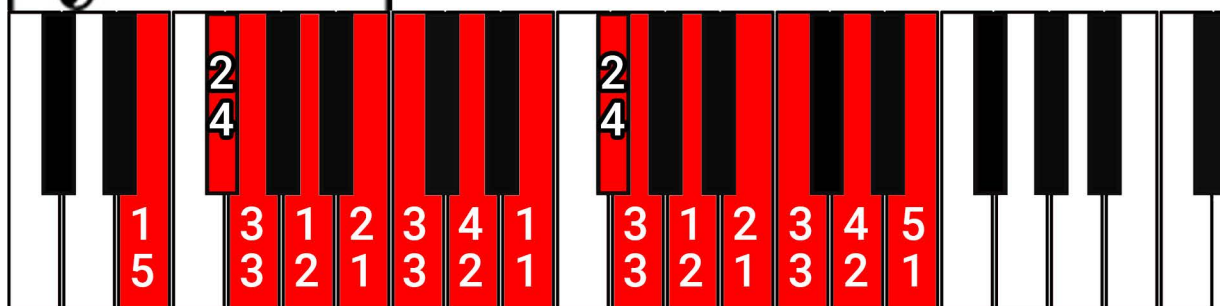
Gamme de **LA** mineure naturelle



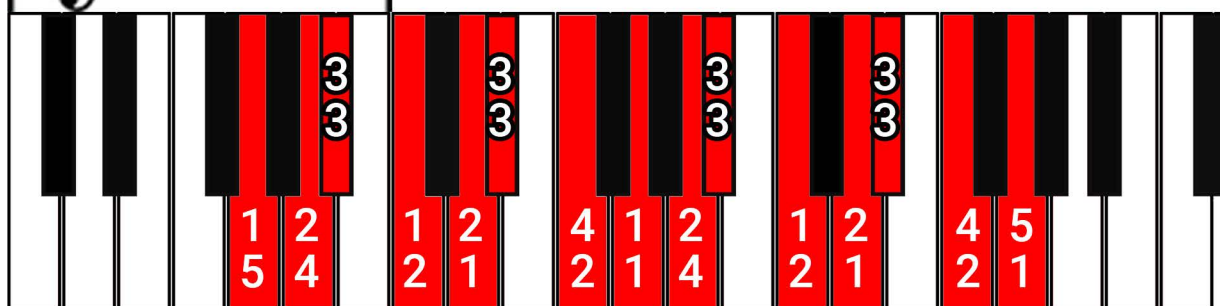
Gamme de **RÉ** mineure naturelle



Gamme de **MI** mineure naturelle

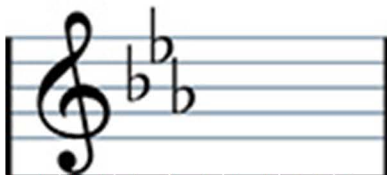
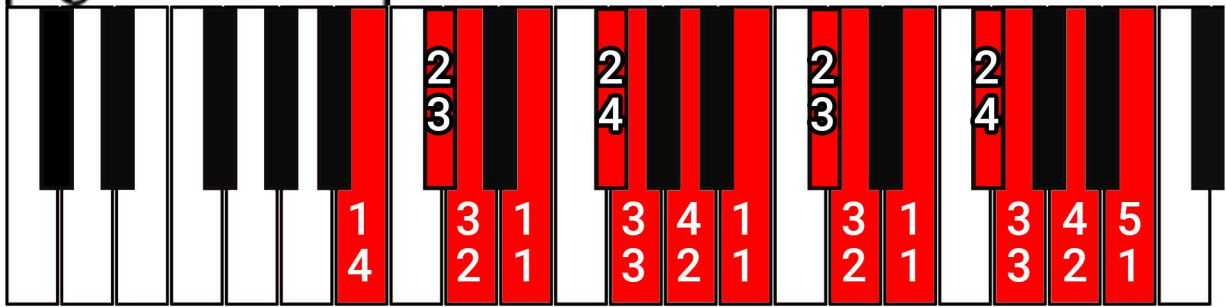


Gamme de **SOL** mineure naturelle

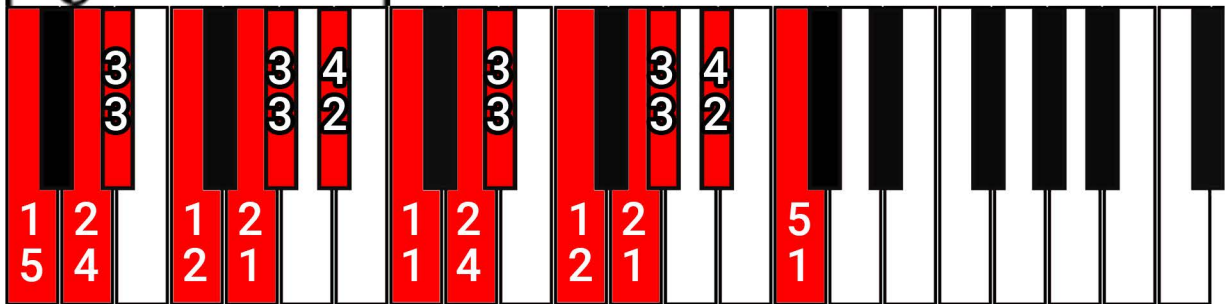




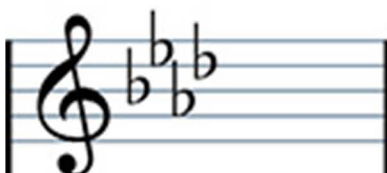
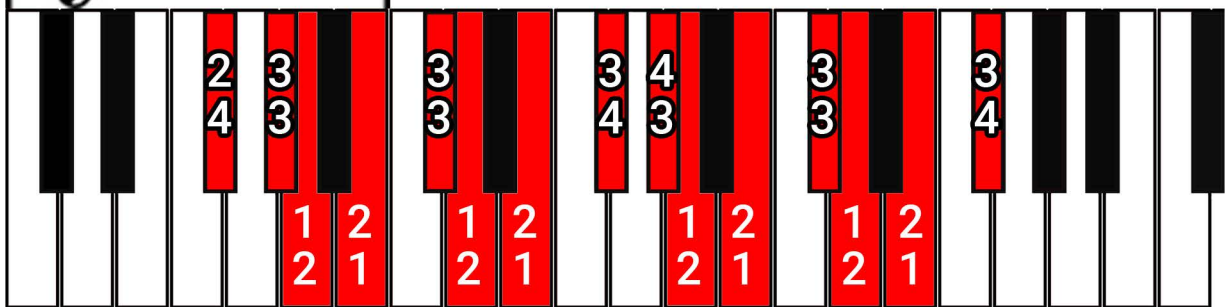
Gamme de **SI** mineure naturelle



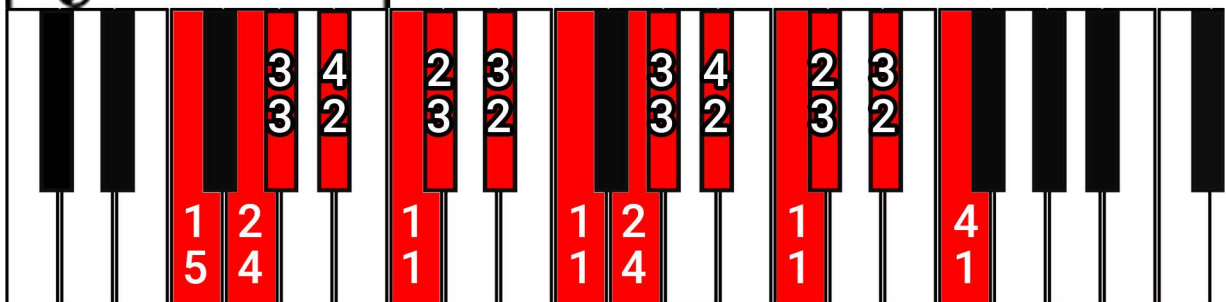
Gamme de **DO** mineure naturelle



Gamme de **FA#** mineure naturelle

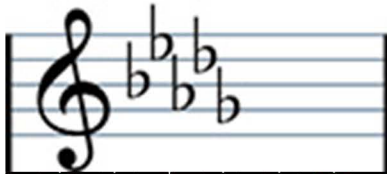
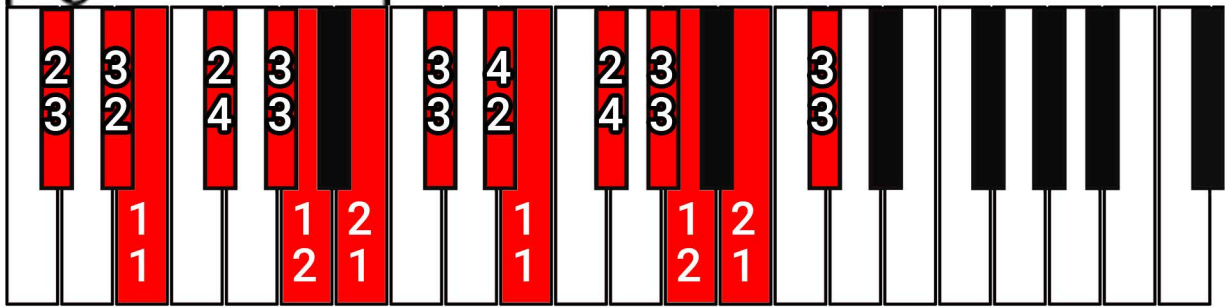


Gamme de **FA** mineure naturelle

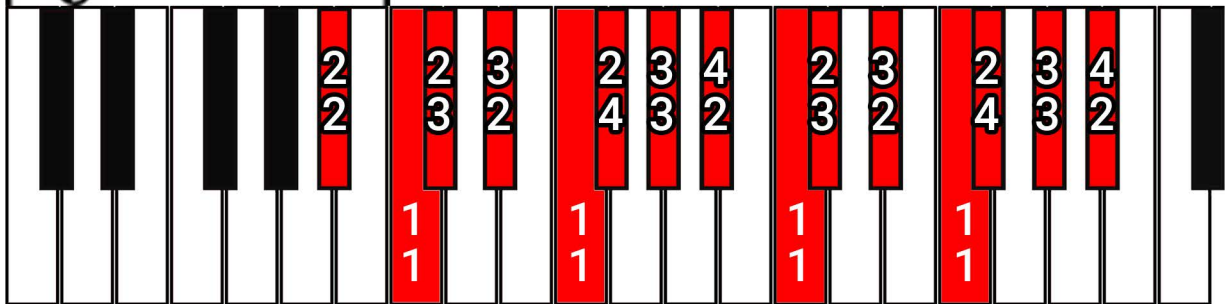




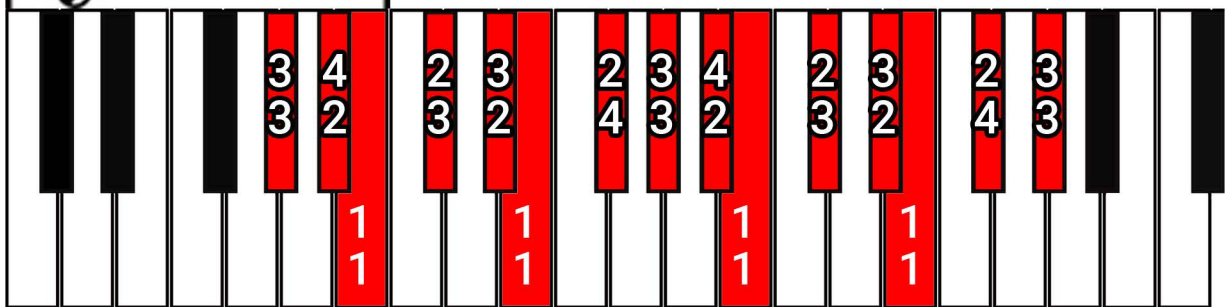
Gamme de **DO# mineure naturelle**



Gamme de **Sib mineure naturelle**



Gamme de **SOL# mineure naturelle**



Gamme de **RE# mineure naturelle**

